

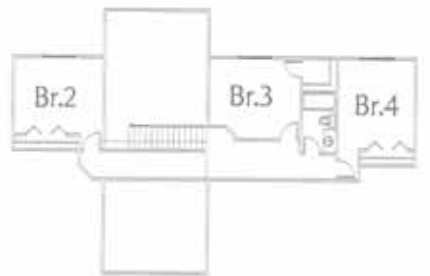
# Gratias *Living*

Building **AWARD-WINNING HOMES** throughout the metro neighborhoods.

## RIVERDALE



DAYLIGHT - R	46'-8" X 60'-0"
LOWER LEVEL	574 SQ.FT.
MAIN	1680 SQ.FT.
UPPER	887 SQ.FT.
TOTAL	3141 SQ.FT.
4 BEDROOMS   3 BATHROOMS   3 CAR GARAGE	



\* Available on select homes only! 30 Year fixed loan. 2/1 Buydown. Interest rate 3.375%-year 1, 4.375%-year 2, 5.375%-years 3-30. 5.462 APR. Maximum LTV 90%. Must close by July 3rd, 2006. Prices and Promotions subject to change without notice. Contact agents for complete details.