

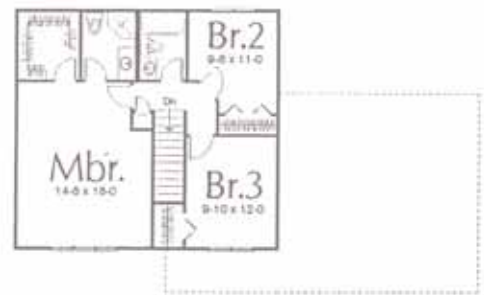
# Gratias *Living*

Building **AWARD-WINNING HOMES** throughout the metro neighborhoods.

## MONTE CARLO



DAYLIGHT - L	30'-0" X 51'-0"
LOWER LEVEL	0 SQ.FT.
MAIN	734 SQ.FT.
UPPER	734 SQ.FT.
TOTAL	1477 SQ.FT.
3 BEDROOMS   2.5 BATHROOMS   3 CAR GARAGE	



# Gratias *Living*

Building **AWARD-WINNING HOMES** throughout the metro neighborhoods.

## MONTE CARLO - R1



DAYLIGHT - L	32'-2" X 52'-0"
LOWER LEVEL	208 SQ.FT.
MAIN	735 SQ.FT.
UPPER	773 SQ.FT.
TOTAL	1716 SQ.FT.
3 BEDROOMS   2.5 BATHROOMS   3 CAR GARAGE	

